

Introducing the extraordinary Belize Motoryacht.





It's as if the legendary cruisers had kept on evolving.



THE BELIZE VISION



Founders Lee Dillon (left) and Wes Moxey.

To be able to create 'the ideal boat' is a rare opportunity.

But it is one eagerly taken up by two stalwarts of the Australian Boating industry, Wes Moxey and Lee Dillon.

Their experience, ideas and resources have combined to form Belize – and a new class of motoryacht.

The philosophy of their exciting new venture can be captured in five important precepts:



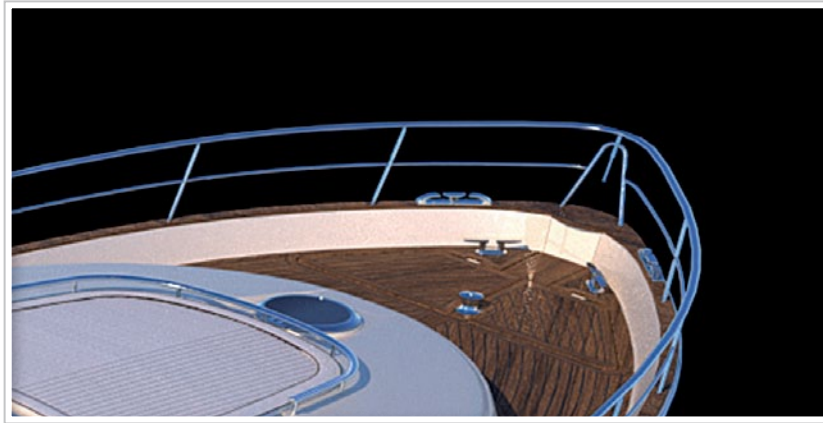
THE BELIZE VISION



- 1.** Belize boats should come as close as possible to the intuitive, personal satisfaction of a one-off custom-built vessel, while still being a practical, limited-series production craft; thus ensuring excellent service support, sense of community and resale protection.



THE BELIZE VISION



- 2.** The style and soul of Belize vessels should pay respect to our classic boat heritage. They should embody the timeless distinction and individuality of traditional marques – almost as if those had continued to evolve to the present day.



THE BELIZE VISION



3. While being 'new tradition' in spirit, Belize boats should take maximum advantage of any new advance in technology that might assist them to be more efficient, reliable, safe responsive and pleasurable.



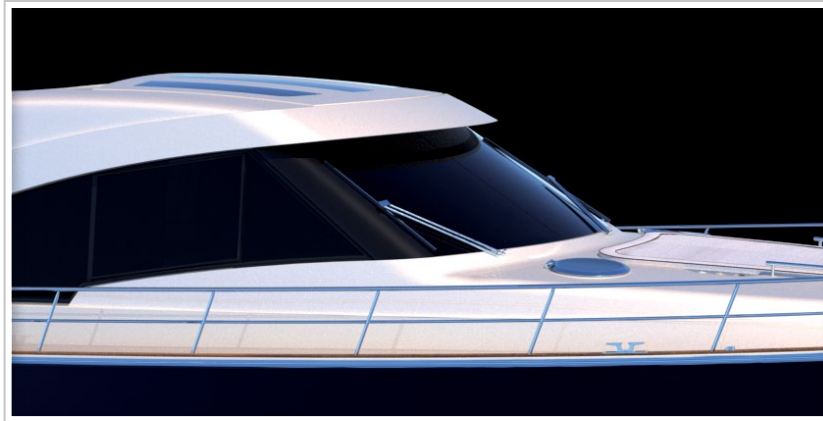
THE BELIZE VISION



4. Wherever practicable, Belize boats should 'minimise compromise' – and that all aspects be of the very highest available standard, wherever their source.



THE BELIZE VISION



- 5.** Belize boat production and supply be carefully restricted; to provide greater quality control and to give owners a genuinely exclusive vessel experience.



SHEER ELEGANCE



Many of the planes and curves of the Belize Motoryacht shape recall the romance of classic craft. Aesthetically you will see and feel a refreshing and considered balance between European panache and Australian practicality.



HARNESSING TECHNOLOGY

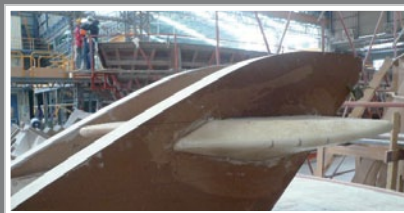
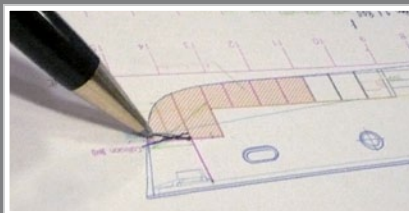


The sense of any classical reference quickly disappears when you examine the technical side of Belize.

- Constructed to CE and ABYC standards in a fully certified ISO yard
- Resin infused-hull with double vinyl ester outer skin
- Watertight, stepped collision bulkhead
- Independent foam-filled hull compartments
- Tank tested hull design



HARNESSING TECHNOLOGY



- Cummins Zeus pod drive propulsion with aft-facing propellers
- Joystick control for the ultimate in manoeuvrability
- 30 knot top speed, 25 knot cruise and 400nm range
- Digital switching for total systems control
- Four electric bilge pumps, anti-siphon loops and double hose clamps on every underwater fitting



INTRODUCING THE THE BELIZE 52 HARDTOP MOTORYACHT

Arriving in Australian in September 2011





THE BELIZE 52 HARDTOP MOTORYACHT



One continuous level of luxury

SPECIFICATIONS

Length Overall (inc. swim platform & bow sprit)	52'10"	16.10 m
Beam	16'06"	5.03 m
Standard Engines x2 Cummins QSC 600 Zeus® Pod drive	600 hp	442 kw
Generator Onan EQD		17.5 kw



INTRODUCING THE THE BELIZE 52 FLYBRIDGE MOTORYACHT

Arriving in Australian in December 2011





THE BELIZE 52 FLYBRIDGE MOTORYACHT



All you could want, with something extra on top.

SPECIFICATIONS

Length Overall (inc. swim platform & bow sprit)	52'10"	16.10 m
Beam	16'06"	5.03 m
Standard Engines x2 Cummins QSC 600 Zeus® Pod drive	600 hp	442 kw
Generator Onan EQD		17.5 kw



The Belize 52 Hardtop Motoryacht
Arriving September 2011



The Belize 52 Flybridge Motoryacht
Arriving December 2011



A T O T A L L Y N E W T R A D I T I O N

If you would like a private presentation of the Belize story and opportunities please contact:



Luxury Design Motoryachts
d'Albora Marinas The Spit Mosman NSW 2088
Telephone +61 2 9930 0000 Email ldillon@ldm.com.au

 www.belizemotoryachts.com.au

Return to page 1